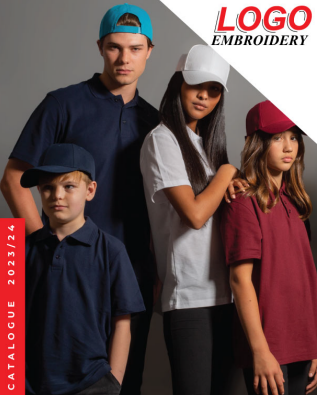


# LOGO

EMBROIDERY

CATALOGUE 2023/24



# **LOGO**

## ***EMBROIDERY***

---

Tel : (+264) 61 - 223 868

Fax : (+264) 61 - 223 870

Address: 29 Edison Street  
Southern Industrial  
Windhoek, Namibia

---

**Embroidery . Screen printing . Corporate clothing . Promotional Gifts**

## TABLE OF CONTENTS

APPAREL COLLECTION	<b>4 - 33</b>
KIDS APPAREL	<b>34 - 43</b>
SIGNATURE COLLECTION	<b>44 - 53</b>
BASEBALL COLLECTION	<b>54 - 62</b>
FASHION COLLECTION	<b>63 - 80</b>
LEISURE COLLECTION	<b>81 - 91</b>
SPORT COLLECTION	<b>92 - 101</b>
INDUSTRIAL COLLECTION	<b>102 - 107</b>
CAMO COLLECTION	<b>108 - 117</b>
WINTER COLLECTION	<b>118 - 129</b>
KIDS COLLECTION	<b>130 - 136</b>
AFRICAN COLLECTION	<b>137 - 141</b>
SYMBOLS & TECHNOLOGY	<b>142</b>
CAP COMPONENTS	<b>143</b>



# APPAREL COLLECTION

APPAREL COLLECTION

# FUNKY T-SHIRT

NEW

- 100% Combed Cotton (300g)
- Side Seams
- Double-Stitched Hem (On Waistline & Sleeves)
- Taped Shoulders & Neckline



Available Sizes: **XS - XXL**

**PRINT ON GARMENT  
FOR DISPLAY PURPOSES ONLY.**

Switch up your  
casual T-Shirt  
with our  
**NEW TIE-DYED**  
garments.

Due to the unique treatment of these garments  
it is typical to see colour and shade differences.  
This is an intentional feature of this style and no  
two garments are alike.

## AVAILABLE COLOURS



Ocean



Rainbow



Tropical



Sun



## CLASSIC T-SHIRT



- Taped Shoulders & Neckline
- 50/50% Combed Cotton (200G)
- Double Stitched Hem On Neckline & Sleeves
- Side Seams

**\*Melange Colours:**

50/50% Combed Cotton, / Polyester mix

Available Sizes: **XS - XXL**

## AVAILABLE COLOURS



## PASTEL COLOURS





CLASSIC T-SHIRT  
Olive



LADIES  
CLASSIC T-SHIRT  
White

LADIES  
CLASSIC T-SHIRT  
Black

APPAREL COLLECTION

## LADIES CLASSIC T-SHIRT



- Taped Shoulders & Neckline
- 100% Combed Cotton (200G)
- Double Finished Hem On Neckline & Sleeves
- Side Seams

**\*Metange Colour:**

Metange (Cotton / Polyester Mix)

Available Sizes: **S - XXL**

### AVAILABLE COLOURS



Black



Navy



Grey Metange



White



Charcoal



Red

PLEASE NOTE: Colours displayed serve as an indication only. They are not necessarily an accurate representation of the garment.





APPAREL COLLECTION

## LADIES RACERBACK VEST

- 80gsm Cotton Spandex (85% Cotton | 15% Spandex)
- Taped Neckline
- Double Stitch Hem On Waistline



### Melange Colours

80gsm (82% Cotton | 12% Polyester | 6% Spandex)

Available Sizes In: **XS - XXL**

### AVAILABLE COLOURS



Black



Grey Melange



White



APPAREL COLLECTION

## FWRD LEGGINGS

- Waist Stretch
- Elasticated Waist Band with
- 82% Cotton | 12% Polyester | 6% Spandex
- Inner Leg Side Seam



Available Sizes In: **XS - XXL**

### AVAILABLE COLOURS



Black



Navy



Charcoal  
Melange

# ACTIV-T



- Taped Shoulders
- 140gsm (100% Polyester)
- Moisture Management
- Side Seams
- Double Stitched Hem On Waistline & Sleeves

Available Sizes On **XS - XXL**

## AVAILABLE COLOURS





**ACTIV-T**  
Luzina Change



APPAREL COLLECTION

## PREMIUM T-SHIRT MELANGE



- Taped Shoulder & Neckline
- Side Seams
- Double Stitched Hem On Waistline, Sleeves & Arm Hole

### \*Melange Colors

Triagon Combed Cotton / Polyester mix

Available sizes on **XS - XXL**

### AVAILABLE MELANGE COLOURS



Navy Melange



Charcoal Melange



Cosplay Gray



Cozy Melange



Royal Melange



Military Melange



Burgundy Melange



PLEASE NOTE: Colors displayed serve as an indication only. They are not necessarily an accurate representation of the garment.

APPAREL COLLECTION

## PREMIUM T-SHIRT

- Taped Shoulders & Neckline
- 100%in. Combed Cotton (200%)
- Side Seams
- Double Ribbed Hem On Waistline, Sleeves & Arm Hole



Available Sizes in **XS - XXL**

### AVAILABLE COLOURS



Black



Navy



Royal



Antique Blue



Red



Olive



Stone



White



Orange



Yellow





APPAREL COLLECTION

## PREMIUM LONG SLEEVE T-SHIRT



- Taped Shoulders & Neckline
- 180gsm Combed Cotton (70% C)
- Side Seams
- Double-Stitched Hem On Waistline & Sleeves

### Melange Colours

180gsm Combed Cotton / Polyester mix

Available Sizes: **S - XXL**

### AVAILABLE COLOURS



APPAREL COLLECTION

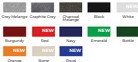
## BASIC CREW NECK SWEATER



- 240gsm Brushed Fleece
- 80% Cotton / 20% Polyester
- Ribbed Waist & Cuffs
- Ribbed Collar With Triangle-Inset

Available Sizes: **S - XXL**

### AVAILABLE COLOURS





APPAREL COLLECTION

## PROMO T-SHIRT



- Taped Shoulders & Neckline
- 100% Combed Cotton (90/10)
- Double Stitched Here On Waistline & Sleeves
- Tubular

### \*Melange Colours

50% Combed Cotton | Polyester Mix

Available Sizes In: **XS - XXL**

### AVAILABLE COLOURS



PLEASE NOTE: Colours displayed serve as an indication only. They are not necessarily an accurate representation of the garment.



**BASE HOODIE**  
Navy

**BASE HOODIE**  
Emerald



APPAREL COLLECTION

## BASE HOODIE



- 240gsm CVC Brushed Fleece
- 60% Cotton / 40% Polyester
- Ribbed Closures/Trim
- Ribbed Waist & Cuffs
- Kangaroo Pocket
- Buttonhole Eyelets

Available Sizes: **XS** - **XXL**

ADD A CUSTOM DESIGN/TEXT TO COMPLEMENT YOUR HOODIE.



PLEASE NOTE: Colors displayed serve as an indication only. They are not necessarily an accurate representation of the garment.



# The Largest Collection of hoodies in South Africa

AVAILABLE COLOURS

White  
Khaki  
Pink  
Yellow  
Orange  
Emerald  
Bottle  
Red  
Burgundy  
Royal  
Navy  
Grey Melange  
Graphite Melange  
Charcoal Melange  
Black





**BOSTON HOODIE**  
Navy

**BOSTON HOODIE**  
Grey Melange



APPAREL COLLECTION

## BOSTON HOODIE



- 280gsm CVC Brushed Fleece
- (80% Cotton / 20% Polyester)
- Shoulder Drawstring
- Ribbed Waist & Cuffs
- Kangaroo Pocket
- Buttonhole Details

Available Sizes in **XS - XXL**

### AVAILABLE COLOURS



APPAREL COLLECTION

## CUSTOM DRAWSTRING NEW

- 200gsm length



PLEASE NOTE: Colours displayed serve as an indication only. They are not necessarily an accurate representation of the garment.

APPAREL COLLECTION

## FWRD SHORTS



NEW

- 240gsm Brushed Fleece
- (80% Cotton | 20% Polyester)
- Ribbed Waist & Cuffs
- Natural Drawcord

Available sizes in **XS - XXL**

### AVAILABLE COLOURS



Black



Navy



Grey Melange

Add an additional custom drawstring to complement your shorts & joggers.



APPAREL COLLECTION

## FWRD JOGGER



- Sherlock Drawstring
- 240gsm CVC Brushed Fleece
- (80% Cotton | 20% Polyester)
- Elastic Waistband
- Side Seam
- Ribbed Waist & Cuffs

Available sizes in **XS - XXL**

### AVAILABLE COLOURS



Black



Navy



Grey Melange

PLEASE NOTE: Colours displayed serve as an indication only. They are not necessarily an accurate representation of the garment.





**FWRD JOGGER**  
Black



**LADIES FITTED V-NECK**  
Navy



APPAREL COLLECTION

## UNISEX V-NECK T-SHIRT

- Taped Shoulders & Neckline
- Nylon-Cambré Cotton (50%)
- Double Stitched Hem On Waistline & Sleeves
- Side Seams



### \*InteLange Colours

Nylon (50% Cotton | 50% Polyester)

Available Sizes In: **XS - XXL**

### AVAILABLE COLOURS



Black



Navy



Charcoal



Grey Melange



White



Red



Fuchsia



APPAREL COLLECTION

## LADIES FITTED V-NECK T-SHIRT

- Taped Shoulders & Neckline
- Nylon (80% Cotton & 1% Spandex)
- Double Stitched Hem On Waistline & Sleeves
- Side Seams



### \*InteLange Colours

Nylon (80% Cotton | 20% Polyester | 1% Spandex)

Available Sizes In: **XS - XXL**

### AVAILABLE COLOURS



Black



White



Navy



Fuchsia



Grey Melange

PLEASE NOTE: Colours displayed serve as an indication only.  
They are not necessarily an accurate representation of the garment.



#### APPAREL COLLECTION

## MENS PRO GOLFER



- Taped Shoulders & Ribbed Collar
- 180gsm Waffle/Polyester Knit (100% Polyester)
- Buttoned Placket
- Light Weight Fabric
- Double Stitched Sleeves & Hem
- Side Seam

Available sizes in **S - XXL**

#### AVAILABLE COLOURS



Black



Navy



Royal



Grey



White



Burgundy



Red

Navy



PLEASE NOTE: Colors displayed serve as an indication only. They are not necessarily an accurate representation of the garment.





APPAREL COLLECTION

## LADIES PRO GOLFER



- Taped Shoulders & Ribbed Collar
- 100gsm/Waffle/Polyester Knit (100% Polyester)
- FullSized
- Light Weight Fabric
- Double Stitched Sleeves & Hem
- Side Seam

### AVAILABLE COLOURS



Black



Navy



Royal



Grey



White



Burgundy



Red

Available Sizes: **XS - XXL**





## APPAREL COLLECTION

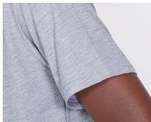
# MENS GOLFER



- Taped Shoulders & Double Ribbed
- Detail On Collar
- 180gsm Polycotton Pique Knit (80% - 20%)
- Light Weight
- Side Seams
- Double Stitched Hem On Waistline & Sleeves

Available Sizes: **XS - XXL**

### AVAILABLE COLOURS





**MENS GOLFER**  
Powder Blue

**MENS GOLFER**  
Grey Mélange



LADIES GOLFER  
Emerald

## LADIES GOLFER



- Taped Shoulders & Double Ribbed
- Detail On Collar
- 180gsm Poly Cotton Pique Knit (95% - 5%)
- Light Weight
- Side Seam
- Double Stitched Hem On Waistline & Sleeves

Available Sizes: S - XXL

## AVAILABLE COLOURS



Black



Navy



White



Grey Melange



Charcoal Melange

Charcoal Melange



Emerald



Red



Pink





APPAREL COLLECTION

## ALASKA PUFFER JACKET

NEW

- 100% Polyester, 30D
- 210T Lining polyester Wadding
- Padding 100Gsm
- Light weight
- Wind and Water resistant
- Camouflaged zipped side pockets
- Right Inside Pocket
- Elasticated binding on bottom hem and sleeves
- Extremely Durable & Crease-Resistant
- Standard Fit



### AVAILABLE COLOURS

Available Sizes in **S - XXL**



Black



Navy

PLEASE NOTE: Colours displayed serve as an indication only. They are not necessarily an accurate representation of the garment.

**ALASKA PUFFER  
JACKET**

Navy



**ALASKA PUFFER  
JACKET**

Black



# ARCTIC BODY WARMER

NEW

- 100% Polyester, 300
- 200F Lining polyester Wadding
- Padding 1000gsm
- Light weight
- Wind and Water resistant
- Concealed Zipper side pockets
- Right Inside Pocket
- Elasticated binding on bottom hem and sleeves
- Extremely Durable & Crease-Resistant
- Standard Fit



Available Sizes in **S - XXL**

## AVAILABLE COLOURS



Black



Navy

## ARCTIC BODY WARMER

Misty







**ARCTIC  
BODY WARMER**  
Black

# KIDS APPAREL COLLECTION

KIDS PROMO  
LONG SLEEVE T-SHIRT

Grey Melange





KIDS PROMO  
LONG SLEEVE T-SHIRT  
Royal



APPAREL COLLECTION

## KIDS PROMO LONG SLEEVE T-SHIRT

- Taped Shoulders & Neckline
- 100% Combed Cotton (100%)
- Side Seams
- Double Ribbed Hem On Neckline & Sleeves



### \*Merlano Colour:

168 gsm Combed Cotton (80% Cotton / 20% Polyester)

Available Sizes in age group: **1 - 14 YEARS**

### AVAILABLE COLOURS



Black



Navy



Royal



Red



White



Grey/Merlano

PLEASE NOTE: Colors displayed serve as an indication only. They are not necessarily an accurate representation of the garment.

KIDS ACTIV-T  
Royal



APPAREL COLLECTION

## KIDS ACTIV-T



- Taped Shoulders & Neckline
- Meshin (100% Polyester)
- Side Seam
- Double Stitched Hem On Waistline, Sleeves & Arm Hole

Available Sizes in age group: **3 - 14 YEARS**

### AVAILABLE COLOURS



Black



Navy



Royal



Slate Grey



White



APPAREL COLLECTION

# KIDS PROMO T-SHIRT

- Taped Shoulders & Neckline
- 100% Combed Cotton (100%)
- Double Stitched Hem On Waistline & Sleeves
- Tubular



## \*Melange Colours

50/50 (50% Cotton / 50% Polyester)

Available Sizes in age group **1 - 16 YEARS**

## AVAILABLE COLOURS



## KIDS PROMO T-SHIRT

Powder Blue



PLEASE NOTE: Colours displayed serve as an indication only.  
They are not necessarily an accurate representation of the garment.



**KID PROMO  
T-SHIRT**  
Red

**KID PROMO  
T-SHIRT**  
Royal

KIDS HOODIE  
White







APPAREL COLLECTION

## KIDS HOODIE



- 260gsm CVC Brushed Fleece
- (80% Cotton / 20% Polyester)
- Shoulder Drawstring
- Ribbed Waist & Cuffs
- Kangaroo Pocket
- Sustainable System

Available sizes in age group: **3 - 14 YEARS**

### AVAILABLE COLOURS

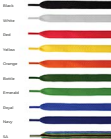


Black    Grey Melange    Navy    White



Red    Burgundy    Royal    Beets

ADD & CUSTOM DRAWSTRING TO COMPLEMENT YOUR HOODIE.



PLEASE NOTE Colours displayed serve as an indication only. They are not necessarily an accurate representation of the garment.



APPAREL COLLECTION

## KIDS GOLFER



- Taped Shoulders & Double Ribbed
- Detail On Collar
- 180gsm Polyester Pique-knit (60% - 20%)
- Side Seam
- Double Ribbed Hem On Waistline & Sleeves

Available Sizes In Age group: **3 - 16 YEARS**

### AVAILABLE COLOURS



APPAREL COLLECTION

## KIDS PRO GOLFER



- Taped Shoulders & Ribbed Collar
- 180gsm Waffle/Polyester Knit (100% Polyester)
- Buttoned Band
- Light weight Fabric
- Side Seam
- Double Ribbed Sleeves & Hem

Available Sizes In Age group: **3 - 16 YEARS**

### AVAILABLE COLOURS



PLEASE NOTE: Colours displayed serve as an indication only.  
They are not necessarily an accurate representation of the garment.



**KIDS GOLFER**  
Red

**KIDS GOLFER**  
White

**AMERICAN**  
Royal



**SIGNATURE COLLECTION**



**AMERICAN**  
Grey Melange



**AMERICAN**  
Ruddy Red

OILSKIN  
tan



# OILSKIN



- Oil Skin Ink Dye- 100% Cotton
- Embroidered Details
- 8 Panel Structured
- Pre-Curved Peak

Available Sizes: **One Size Fits Most**

Branding Area: **120 x 60mm**



Metal Clasp Buckle & Touch-In Return

## AVAILABLE COLOURS



Chocolate



Tan



Steel Grey



Olive





SIGNATURE COLLECTION

## SIGNATURE SNAPBACK

- 100% Heavy Acrylic
- Embroidered Eyelets
- 6 Panel Structured
- Flat Peak



Plastic Tab Closure

Available Sizes: **One Size Fits Most**

Branding Area: 120 x 60mm

### AVAILABLE COLOURS



Denim Blue    Grey Melange    Grey Melange / Black    Graphite Grey

SIGNATURE COLLECTION

## SIGNATURE SNAPBACK CAMO

END OF RANGE

- 100% Heavy Acrylic
- Embroidered Eyelets
- 6 Panel Structured
- Flat Peak



Plastic Tab Closure

Available Sizes: **One Size Fits Most**

Branding Area: 120 x 60mm

### AVAILABLE COLOURS



Green Camo    Pixel Camo



PLEASE NOTE: Colours displayed serve as an indication only.  
They are not necessarily an accurate representation of the garment.



SIGNATURE COLLECTION

# AMERICAN



END OF RANGE

- 100% Heavy Acrylic
- Embroidered Eyelets
- 6 Panel Structured
- Pre-Curved Peak



Plastic Tab Closure

Available Sizes: **One Size Fits Most**

Branding Area: 120 x 60mm

## AVAILABLE COLOURS



Graphite Grey    Black Brown    Grey Melange



Denim Blue    Royal    Ruby Red



SIGNATURE COLLECTION

# AMERICAN TWO TONE



END OF RANGE

- 100% Heavy Acrylic
- Embroidered Eyelets
- 6 Panel Structured
- Pre-Curved Peak



Plastic Tab Closure

Available Sizes: **One Size Fits Most**

Branding Area: 120 x 60mm

## AVAILABLE COLOURS



Black / Graphite Grey    Grey Melange / Black    Grey Melange / Charcoal    Grey Melange / Navy

ALPHA SUPAFIT  
Navy



SIGNATURE COLLECTION

## ALPHA SUPAFIT



- 100% Polyester
- 8 Panel Structured Crown
- Pre-Curved Peak
- Fitted Back
- Stretch Fit

Available Sizes: **One Size Fits Most**

Branding Area: 120 x 60mm

### AVAILABLE COLOURS



Red



Navy



Black



Grey



Charcoal

PLEASE NOTE: Colours displayed serve as an indication only. They are not necessarily an accurate representation of the garment.

SIGNATURE COLLECTION

# SUPAFLEX



END OF  
RANGE

- Cotton Spandex
- Embroidered Eyelets
- 6 Panel Unstructured
- Flat Peak
- Fitted Back
- Stretch FPC

Branding Area: **120 x 60mm**

Available Sizes:

**S/M** 64.5cm - 67.5cm

**M/L** 67.5cm - 69.5cm

## AVAILABLE COLOURS



Black



Navy



Charcoal



**"NEW" SUPA FIT**  
Black



SIGNATURE COLLECTION

# "NEW" SUPAFIT



NEW

- Cotton Spandex
- Embroidered Eyelets
- 8 Panel Structured
- Pre-Curved Peak
- Fitted Back
- Stretch Fit

Branding Area: 120 x 60mm

Available Sizes: One Size Fits Most

## AVAILABLE COLOURS



Black



Navy



Royal



Red



Grey



Charcoal



- Fitted Back
- Stretch Fit



PLEASE NOTE: Colours displayed serve as an indication only. They are not necessarily an accurate representation of the garment.

# BASEBALL COLLECTION





# AMERICANO



- Heavy Acrylic (100%)
- 8 Panel Structured
- Pre-curved Peak
- 4 Size Stitched Sweatband



Self Covered Velcro Strap

Branding Area: 120 x 60mm

Available Sizes: One Size Fits Most

## AVAILABLE COLOURS





A male model with a muscular build is shown from the waist up, wearing a vibrant blue baseball cap and a matching blue t-shirt. He is looking off to the right, with his right hand raised to the brim of the cap. The background is a plain, light-colored wall.

**AMERICANO**

*Airforce Blue*

**PREMIUM T-SHIRT**

*Airforce Blue*



BASEBALL COLLECTION

## CLASSIC 6 PANEL



- Heavy Brushed Cotton (100%)
- 6 Panel Structured
- Embroidered Eyelet
- Pre-curved Peak
- 6 Row 100%ed Sweatband

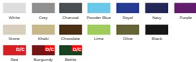


Belt Buckle & Tuck-in Return

Branding Area: 120 x 60mm

Available Sizes: One Size Fits Most

### AVAILABLE COLOURS



PLEASE NOTE: Colors displayed serve as an indication only. They are not necessarily an accurate representation of the garment.

BASEBALL COLLECTION

## CLASSIC SANDWICH

- Heavy Brushed Cotton (100%)
- 6 Panel Structured
- Metal Eyelets
- Pre-curved Peak With Sandwich
- 4 Row 130 Fed Sweatband



Belt Buckle & Truck-in Return

Branding Area: 120 x 60mm

Available Sizes: **One Size Fits Most**

### AVAILABLE COLOURS



Black/White



Black/Orange



Black/Red



Navy/White



Navy/Yellow



Navy/Red



Royal/White



Khaki/Black



Red/White



BASEBALL COLLECTION

## PROMO SANDWICH

- Brushed Cotton (100%)
- 6 Panel Structured
- Embroidered Eyelets
- Pre-curved Peak With Sandwich
- 4 Row 130 Fed Sweatband



Self Covered Yellow Strap

Branding Area: 120 x 60mm

Available Sizes: **One Size Fits Most**

### AVAILABLE COLOURS



Black/Red



Black/White



Khaki/Black



Red/White



Grey/White



Charcoal/White



Navy/White



Navy/Red



Royal/White



White/Black



**PROMO 6 PANEL**  
Navy

**PROMO 6 PANEL**  
Charcoal



BASEBALL COLLECTION

# PROMO 6 PANEL



- Brushed Cotton (100%)
- 6 Panel Structured
- Embroidered Eyelet
- Pre-curved Peak
- 6 Row 100%ed Sweatband



Self Covered Velcro Strap

Branding Area: 120 x 60mm

Available Sizes: **One Size Fits Most**

## AVAILABLE COLOURS





BASEBALL COLLECTION

## CLASSIC TWO TONE



- Heavy Brushed Cotton (100%)
- 6 Panel Structured
- Embroidered Eyelets
- Pre-curved Peak
- 4 Rows 1200 Ppd Sweatband

Branding Area: 120 x 60mm

Available Sizes: [Over Size Fits Most](#)



Belt Buckle & Tuck-In Return

### AVAILABLE COLOURS



Grey/Black



Khaki/Forest



Khaki/Navy

BASEBALL COLLECTION

# SUPERIOR 5 PANEL



- Polyester Blend (80% - 20%)
- 5 Panel Structured
- Embroidered Details
- Pre-Curved Peak
- 3 Row Stitched Sweatband



Self Covered Velcro Strap

Branding Area: 120 x 60mm

Available Sizes: **One Size Fits Most**

## AVAILABLE COLOURS



PLEASE NOTE: Colours displayed serve as an indication only.  
They are not necessarily an accurate representation of the garment.

VINTAGE TRUCKER  
TWO-TONE  
Royal / White

VINTAGE TRUCKER  
TWO-TONE  
Black / White

FASHION COLLECTION

## TRUCKER

Olive / Stone

## TRUCKER

Charcoal / Black



### FASHION COLLECTION

## TRUCKER



- 100% Brushed Cotton Twill
- Hard Mesh Back
- 5 Panel Structured
- Pre-curved Peak



Plastic Buckle Closure

Branding Area: 130 x 60mm

Available Sizes: **One Size Fits Most**

### AVAILABLE COLOURS



PLEASE NOTE: Colours displayed serve as an indication only. They are not necessarily an accurate representation of the garment.



# LINEN CAP



- 100% Polyester
- 6 Panel Structured
- Embroidered Details
- Pre-Curved Peak
- 4 Row Stitched Sweatband



Metal Clip Buckle & Top in Return

Branding Area: 120 x 60mm

Available Sizes: One Size Fits Most

## AVAILABLE COLOURS



Sky Blue



Grey



Mint Green



Lemon



Peach



Lilac



Sand



LINEN CAP  
Lilac

CLASSIC  
T-SHIRT  
Lilac

**LINEN CAP**

*Sky Blue*

**CLASSIC  
T-SHIRT**

*Sky Blue*



**LINEN CAP**

*Mint Green*

**CLASSIC  
T-SHIRT**

*Mint Green*



**LINEN CAP**

*Peach*

**CLASSIC  
T-SHIRT**

*Peach*



**LINEN CAP**

Lemon

**CLASSIC T-SHIRT**

Lemon



**CAMPER TRUCKER**  
Chino / Khaki



# CAMPER TRUCKER



- 100% Enzyme Washed Cotton
- 8 Panel Unstructured
- Embroidered Eyelets
- Pre-curved Peak
- Low Profile

Branding Area: 100 x 50mm

Available Sizes: One Size Fits Most

## AVAILABLE COLOURS



Charcoal /  
Khaki



Grey / Khaki



Denim /  
Khaki



Olive / Khaki



Mustard /  
Khaki



Berlin / Khaki



Self Covered Viscors Strip



A FRAME TRUCKER

Red

SHAPBACK

Royal



FASHION COLLECTION

## SNAPBACK



- 100% Heavy Acrylic
- 3 Panel Structured
- Embroidered Eyelets
- Flat Peak



Plastic Tab Closure

Branding Area: 120 x 60mm

Available Sizes: **One Size Fits Most**

### AVAILABLE COLOURS



FASHION COLLECTION

## A FRAME TRUCKER



- 100% Acrylic/Mesh Back
- 3 Panel Structured
- Embroidered Eyelets
- Flat Peak



Plastic Tab Closure

Branding Area: 120 x 60mm

Available Sizes: **One Size Fits Most**

### AVAILABLE COLOURS



FASHION COLLECTION

# OTTOMAN



- 100% Polyester
- 6 Panel Structured
- Embroidered Eyelets
- Pre-curved Peak
- 4 Row Stitched Sweatband

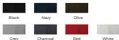


Self Covered Velcro Strap

Branding Area: 120 x 60mm

Available Sizes: One Size Fits Most

## AVAILABLE COLOURS



FASHION COLLECTION

# FIDEL



- 100% Brushed Cotton Twill
- Military Style
- Unstructured
- Gun Metal Eyelets
- Pre-curved Peak



Self Covered Velcro Strap

Branding Area: 80 x 30mm

Available Sizes: One Size Fits Most

## AVAILABLE COLOURS



PLEASE NOTE: Colours displayed serve as an indication only. They are not necessarily an accurate representation of the garment.



OTTOMAN

Grey



## BOOMERANG

END OF  
RANGE

- 100% Acrylic
- 6 Panel Structured
- Embroidered System
- Pre-Curved Peak
- White Embroidery & Contrast on Peak
- 4 Size 100% Cotton Sweatband



Self Covered Velcro Strap

Branding Area: 120 x 60mm

Available Sizes: One Size Fits Most

## AVAILABLE COLOURS

Khaki/White  
/NavyKhaki/White  
/BlackNavy/White  
/FluorescentNavy/White  
/RedBlack/White  
/RedBlack/White  
/YellowBlack/White  
/Orange

## BOOMERANG

Navy / White / Red



**SNAPBACK  
TWO TONE**  
Black / Turquoise



**SNAPBACK  
TWO TONE**  
Black / Red



FASHION COLLECTION

## SNAPBACK TWO TONE

END OF  
RANGE

- 100% Heavy Acrylic
- 8 Panel Structured
- Embroidered Eyelets
- Flat Peak



Plastic Tab Closure

Branding Area: 120 x 60mm

Available Sizes: One Size Fits Most

### AVAILABLE COLOURS



Black/Red



Black/Purple



Black/  
Turquoise

VINTAGE TRUCKER

Navy



FASHION COLLECTION

# VINTAGE TRUCKER



- 100% Polyester
- Hard Mesh Back
- Foam Front
- 3 Panel Structured
- Pre-curved Peak

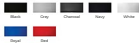


Double Plastic Tab Closure

Branding Area: 120 x 60mm

Available Sizes: **One Size Fits Most**

## AVAILABLE COLOURS



FASHION COLLECTION

# VINTAGE TRUCKER TWO-TONE



- 100% Polyester
- Hard Mesh Back
- Foam Front
- 3 Panel Structured
- Pre-curved Peak



Double Plastic Tab Closure

Branding Area: 120 x 60mm

Available Sizes: **One Size Fits Most**

## AVAILABLE COLOURS



VINTAGE TRUCKER  
THREE-TONE

Navy / White / Burgundy



VINTAGE TRUCKER  
THREE-TONE

Navy / White / Powder Blue



FASHION COLLECTION

# VINTAGE TRUCKER THREE-TONE



- 100% Polyester
- Hard Mesh Back
- Foam Front
- 5 Panel Structured
- Pre-curved Peak



Double Mesh Tab Closure

Branding Area: 120 x 60mm

Available 124C One Size Fits Most

## AVAILABLE COLOURS



Royal / White  
/ Navy



Navy / White  
/ Powder Blue



Navy / White  
/ Burgundy



Navy / White  
/ Teal



Powder Blue /  
White / Navy



Charcoal /  
White / Black

# URBAN TRUCKER



- 100% Combed Washed Cotton
- Soft Mesh Back
- 6 Panel Unstructured
- Embroidered Eyelets
- Pre-curved Peak
- Cotton Sweatband



Self Covered Velcro Strap

Branding Area: 120 x 60mm

Available Sizes: **One Size Fits Most**

## AVAILABLE COLOURS



Grey/Charcoal



Khaki/Khaki



Olive/Khaki



Chocolate/  
Khaki



Charcoal/  
Charcoal



Black/Black

URBAN TRUCKER  
Charcoal





FASHION COLLECTION

## GATSBY



- 100% Heavy Brushed Cotton
- Soft Lined

Branding Area: 60 x 50mm

Available Sizes: One Size Fits Most



Belt, Buckle & Tuck-In Return

### AVAILABLE COLOURS



Black



Navy



Charcoal



Stone



FASHION COLLECTION

## PANAMA HAT



- White Woven Straw
- Wide Brim
- Hat Lined Inside

Branding Area: 500 x 250mm

Available Sizes:

S/M 68cm | L/LL 70cm

### AVAILABLE COLOURS

Hat colour: White



White

### AVAILABLE HATBAND COLOURS

Hat Band Sold Separately



White



Pink



Red



Navy



Dark Blue



Cameo Green



Black

PLEASE NOTE: Colours displayed serve as an indication only.  
They are not necessarily an accurate representation of the garment.



# LEISURE COLLECTION

PHOENIX  
BUCKET HAT  
Orange

PHOENIX  
BUCKET HAT  
Yellow

PHOENIX  
BUCKET HAT  
Green



LEISURE COLLECTION

## SHADY BUCKET HAT

- 100% Heavy Brushed Cotton
- Unstructured
- Embroidered Eyelets
- High Crown
- Small Brim



Branding Area: 140 x 60mm

Available Sizes:	
S/M sizes	L/XL sizes

### AVAILABLE COLOURS



LEISURE COLLECTION

## PHOENIX BUCKET HAT

- 100% Cotton Twill
- Unstructured
- Embroidered Eyelets



Branding Area: 140 x 60mm

Available Sizes:	
S/M sizes	L/XL sizes

### AVAILABLE COLOURS





CAMPER  
Denim



CAMPER  
Raspberry

## LEISURE COLLECTION

# CAMPER



- 100% Enzyme Washed Cotton
- 6 Panel Unlined Sunlit
- Embroidered Eyelets
- Pre-curved Peak
- Low Profile



Self Fabric Velcro Strap

Branding Area: 100 x 50mm

Available Sizes: **One Size Fits Most**

## AVAILABLE COLOURS



Charcoal

Grey

Olive

Bottle Green

Mustard

Peach



Cobalt Blue



Azure



Turquoise



Fuchsia



Raspberry



Coral Red



Royal



Denim

**HARLEM  
BUCKET HAT**  
Charcoal





LEISURE COLLECTION

## HARLEM BUCKET HAT



NEW

- High Crown
- 100% Synzyme Washed cotton
- Unstructured
- Embroidered Details
- Binding on Hat Brim

Branding Area: 140 x 60mm

Available Sizes:

S/M Sizes

L/XL Sizes

### AVAILABLE COLOURS



Olive



Khaki



Denim



Charcoal

PLEASE NOTE: Colours displayed serve as an indication only. They are not necessarily an accurate representation of the garment.

LEISURE COLLECTION

# URBAN



- 100% Combed Washed Cotton
- 5 Panel Unstructured
- Embroidered Eyelets
- Pre-Curved Peak
- Low Profile



Basic Clasp Buckle & Twist-in Return

Branding Area: 120 x 60mm

Available Sizes: **One Size Fits Most**

## AVAILABLE COLOURS



Tan



Olive



Chocolate



Stone



Khaki



Grey



Charcoal



Navy



Black



Burnt Orange

URBAN

Burnt Orange



URBAN

Charcoal



**RANGER HAT**  
Army Brown



LEISURE COLLECTION

## RANGER HAT



- 100% Heavy Brushed Cotton
- GUN Thermal Mesh Eyelets
- Cord With Slide Toggle
- Looped Band
- Lined Inner Hat With Mesh

Branding Area: 140 x 40mm

Available Sizes:

S/M 68cm

L/XL 70cm

### AVAILABLE COLOURS



Stone



Army Green



Army Brown



Camo Green

PLEASE NOTE: Colours displayed serve as an indication only. They are not necessarily an accurate representation of the garment.

BUSH HAT  
Coffee







LEISURE COLLECTION

## BUSH HAT



- 100% Cotton Twill
- Breathable Eyelets & Straps
- Clip-Up Brim
- Cord With Slide Toggle

Branding Area: 140 x 60mm

Available Sizes	
S/M 68cm	L/XL 74cm

### AVAILABLE COLOURS



PLEASE NOTE: Colours displayed serve as an indication only. They are not necessarily an accurate representation of the garment.



LEISURE COLLECTION

## WEATHERMAN



- UV Protected Microfiber
- Breathable Mesh On Crown
- 8 Panel Crown
- Flap Can Be Concealed
- Inner Sweatband
- Cord With Slide Toggle
- Tuck-in Neck Protection Flap
- Elastic Head Fastener With Slide Toggle

Branding Area: 100 x 50mm

Available Sizes: **One Size Fits Most**

### AVAILABLE COLOURS



Stone



Olive



Camel



Dark Grey



Navy

PLEASE NOTE: Colours displayed serve as an indication only. They are not necessarily an accurate representation of the garment.

## SAVANNAH HAT

Dark Khaki



LEISURE COLLECTION

# SAVANNAH HAT



NEW

- 100% Heavy Cotton Twill
- Mesh Crown
- Back Flap
- Cord With Slide Toggle

Branding Area: 140 x 60mm

Available Sizes

S/M Size

L/XL Size

## AVAILABLE COLOURS



# SPORT COLLECTION

PERFORMER

Navy

PERFORMER

Grey





SPORT COLLECTION

## PERFORMER



NEW

- 100% Microfibre
- 6 Panel Unstructured with top-stitching
- Reflective binding on peak
- Mesh insert on center back
- Reflective transfer on back strap



Looped Velcro Strap

Branding Area: 50 x 50mm

Available Sizes: **One Size Fits Most**

### AVAILABLE COLOURS



Black



Navy



Red



Cyan Pink



Grey



White

VENTURE HAT  
Black



SPORT COLLECTION

# VENTURE HAT



WASH

- 100% Microfibre
- Embroidered System
- Side Toggle at back
- Inside Name Label

Branding Area: 80 x 30mm

Available Sizes:

S/M Sizes    L/XL Sizes

## AVAILABLE COLOURS



Burgundy

Red

Black

Beige



Navy



Royal



Inside Name Label

VENTURE HAT  
BLACK



SPORT COLLECTION

## LIBERTY



- 100% Microfibre
- 8 Panel Structured
- Embroidered System
- Pre-Curved Peak
- Laid Back Style



Belt Buckle & Tuck-in Return

Branding Area: 120 x 60mm

Available Sizes: One Size Fits Most

### AVAILABLE COLOURS



Black



Charcoal



Navy



White



Turquoise



SPORT COLLECTION

## FISHERMAN



- UV Protected Polyester Cotton
- Back Flap For Added Neck Protection



Self Covered Velcro Strap

Branding Area: 80 x 40mm

Available Sizes: One Size Fits Most

### AVAILABLE COLOURS



Stone



Khaki



Olive



PLEASE NOTE: Colours displayed serve as an indication only.  
They are not necessarily an accurate representation of the garment.





## SPORT COLLECTION

# CUBE



- 100% Polyester
- 8 Panel Structured
- Embroidered Eyelets
- Pre-Curved Peak



Self Covered Velcro Strap

Branding Area: 120 x 60mm

Available Sizes: **One Size Fits Most**

## AVAILABLE COLOURS



Black



Grey



Charcoal



Navy



Royal



White



Khaki



Olive



Mint Green



Red



## SPORT COLLECTION

# PUTTER



- 100% Heavy Cotton Chino
- 8 Panel Structured
- Metal Eyelets
- Pre-Curved Peak



Belt Buckle & Truck-In Feature

Branding Area: 120 x 60mm

Available Sizes: **One Size Fits Most**

## AVAILABLE COLOURS



Black



Navy



Olive



Stone



White

SPORT COLLECTION

## LECOSTE



- 100% Polyester Waffle
- 8-Panel Structured
- Embroidered Eyelets
- Pre-Curved Peak



Belt Buckle & Tuck-In Return

Branding Area: 120 x 60mm

Available Sizes: One Size Fits Most

### AVAILABLE COLOURS



Black Grey Charcoal Navy Royal Red



White Stone Olive Lime Bottle Pink



SPORT COLLECTION

## NATIONAL



- 100% Heavy Brushed Cotton
- 8-Panel Structured
- Embroidered Eyelets
- Pre-Curved Peak
- Woven Fabric Detail On Peak



Self Covered Velcro Strap

Branding Area: 120 x 60mm

Available Sizes: One Size Fits Most

### AVAILABLE COLOURS



Black

Navy

Bottle





CRICKET HAT  
Navy

SPORT COLLECTION

## CRICKET HAT



- Heavy Brushed Cotton
- Metal Eyelets
- Chin With Side Toggle

Branding Area: 80 x 60mm

Available Sizes	
S/M sizes	L/XL sizes

### AVAILABLE COLOURS





## SPORT COLLECTION

# SUNVISOR



- 100% Brushed Cotton Twill
- Flat-Curved Peak

Branding Area: **80 x 30mm**

Available Sizes: **One Size Fits Most**



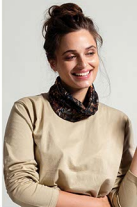
Self-Covered Velcro Strap

## AVAILABLE COLOURS



Color Green

PLEASE NOTE: Colors displayed serve as an indication only. They are not necessarily an accurate representation of the garment.



SPORT COLLECTION

## MULTIFUNCTIONAL HEADWEAR



- White 88gsm | Colour 88gsm | Camo and M 88gsm
- 88% Polyester | 12% Spandex
- Multifunctional

Branding Area: 450 x 250mm

Available in 12m. One Size Fits Most.



### AVAILABLE COLOURS



Africa's  
largest  
selection  
of colours.

# INDUSTRIAL COLLECTION

**CHEF APRON**  
White





**CHEF APRON**  
Black

**BARISTA APRON**  
Black



INDUSTRIAL COLLECTION

## CHEF APRON



NEW

- Poly/Cotton Twill (Polyester & Cotton Mix)
- Adjustable neck strap With Buckle Slider
- Large Front Pocket With Center Seam
- Pocket Size: 170 x 280mm
- Apron Size: 860 x 760mm

Branding Area: **860 x 760mm**

Available Sizes: **One Size Fits Most**

### AVAILABLE COLOURS



Red



Grey



Green



Blue



Black



White

PLEASE NOTE: Colors displayed serve as an indication only. They are not necessarily an accurate representation of the garment.





INDUSTRIAL COLLECTION

## BARISTA APRON



NEW

- Front Pocket With Nylon Zip
- Plastic Clip Buckle
- Polyester & Cotton Mix

Branding Area: 350 x 160mm

Available Sizes: **Over Size Fits Most**



Black

### AVAILABLE COLOURS



White



Red



Navy



INDUSTRIAL COLLECTION

## SHIELD



- 100% Polyester
- 8 Panel Structured
- Reflective Tape Binding
- High visibility

Branding Area: 120 x 60mm

Available Sizes: **One Size Fits Most**



Self Covered Velcro Strap

### AVAILABLE COLOURS



Cyber Yellow



Cyber Orange



INDUSTRIAL COLLECTION

## VISION HAT



- 100% Polyester
- Reffed Duv-Striding on Brim Material
- Card With Slide Toggle

Branding Area: 100 x 60mm

Available Sizes:

**S/M 60cm L/XL 66cm**

### AVAILABLE COLOURS



Cyber Yellow



Cyber Orange

PLEASE NOTE: Colours displayed serve as an indication only.  
They are not necessarily an accurate representation of the garment.

**VISION HAT**  
Cyber Yellow



# CAMO COLLECTION

**BASIC 6 PANEL**  
Woodland Camo

**KIDS AMERICANO**  
Camo Green





**BASIC 6 PANEL**  
Forest Camo

**TRUCKER**  
Woodland Camo



**TRUCKER**  
Woodland Camo

CAMO COLLECTION

## TRUCKER CAMO



- 100% Cotton Twill
- Mesh Back
- 6 Panel Structured
- Pre-Curved Peak
- 6 Row Stitched Sweatband



Plastic Tab Closure

Branding Area: 120 x 60mm

Available Sizes: **One Size Fits Most**

### AVAILABLE COLOURS



Camo Green  
/ White



Woodland Camo  
/ White



Woodland Camo  
/ Black

PLEASE NOTE: Colors displayed serve as an indication only. They are not necessarily an accurate representation of the garment.

TRUCKER  
Woodland Camo



**BASIC 6 PANEL CAMO**  
Pixel Camo



CAMO COLLECTION

## BASIC 6 PANEL CAMO



- 100% Cotton Twill
- 6 Panel Structured
- Embroidered Eyelets
- Pre-Curved Peak
- 6 Row 1000hd Sweatband

Branding Area: 120 x 60mm

Available Sizes: **One Size Fits Most**



Self Covered Velcro Strap

### AVAILABLE COLOURS



Black Camo



Blue Camo



Pink Camo



Orange Camo



Brown Camo



Green Camo



Woodland  
Camo



Pixel Camo



CAMO COLLECTION

## SIGNATURE SNAPBACK CAMO



END OF  
RANGE

- 100% Heavy Acrylic
- 6 Panel Structured
- Embroidered Eyelets
- Flat Peak



Plastic Tab Closure

Branding Area: 120 x 60mm

Available Sizes: **One Size Fits Most**

### AVAILABLE COLOURS



Green Camo



Blue Camo



CAMO COLLECTION

## SUNVISOR CAMO



END OF  
RANGE

- 100% Cotton Twill
- Pre-Curved Peak



Self Covered Velcro Strap

Branding Area: 80 x 30mm

Available Sizes: **One Size Fits Most**

### AVAILABLE COLOUR



Camo Green





CAMO COLLECTION

## RANGER HAT CAMO

END OF RANGE

- 100% Heavy Cotton Twill
- Curv-Metal Mesh Eyelids
- Cord With Slide Toggle
- Looping Band
- Lined Inner Hat With Mesh



Branding Area: 140 x 40mm

Available Sizes:	
S/M 68cm	L/XL 68cm

### AVAILABLE COLOUR



CAMO COLLECTION

## BUSH HAT CAMO

END OF RANGE

- 100% Cotton Twill
- Brass Eyelids & Studs
- Clip-Up Brim
- Cord With Slide Toggle



Branding Area: 140 x 60mm

Available Sizes:	
S/M 68cm	L/XL 68cm

### AVAILABLE COLOURS





**FIDEL**  
Camo Green

CAMO COLLECTION

## FIDEL CAMO



END OF  
RANGE

- 100% Cotton Twill
- Unstructured
- Military Style
- Own Metal Eyelets
- Flat-Curved Peak
- Sweatband



Self Covered Velcro Strap

Branding Area: 80 x 20mm

Available Sizes: One Size Fits Most

### AVAILABLE COLOUR



Camo Green



## CLASSIC T-SHIRT

Camo Green

CAMO COLLECTION

# CLASSIC CAMO T-SHIRT



- Taped Shoulders & Neckline
- Midgain Combed Cotton (100%)
- Double Stitched Hems On Waistline & Sleeves
- Side Seams

AVAILABLE SIZES IN: **XS - 4XL**

## AVAILABLE COLOUR



Camo Green

PLEASE NOTE: Colors displayed serve as an indication only. They are not necessarily an accurate representation of the garment.

CAMO COLLECTION

## MULTIFUNCTIONAL HEADWEAR CAMO



- 10 - 100gsm
- 95% Polyester & 5% Spandex
- Multifunctional

Branding Area: 450 x 250mm

Available Sizes: **One Size Fits Most**

### AVAILABLE COLOURS



Autumn Camo



Camo Green



CAMO COLLECTION

## FISHERMAN CAMO

END OF RANGE



- 100% Cotton Twill
- Pre-Curved Peak
- UV Protected Fabric
- Back Flap For Added Neck Protection
- Sweatband

Branding Area: 80 x 40mm

Available Sizes: **One Size Fits Most**



Self Covered Velcro Strap

### AVAILABLE COLOUR



Camo Green



# WINTER COLLECTION







## ALPINE BEANIE

Grey Melange

WINTER COLLECTION

# ALPINE BEANIE



- 100% Acrylic Knitted
- Pom Detail
- Fold Up Band

Branding Area: 40 x 130mm

Available Sizes: One Size Fits Most

### AVAILABLE COLOURS



Grey Melange



Yellow



Red



Black



Navy



Royal

PLEASE NOTE: Colours displayed serve as an indication only. They are not necessarily an accurate representation of the garment.



SKULL BEANIE  
Red

SKULL BEANIE  
Royal



WINTER COLLECTION

## SKULL BEANIE



- 100% acrylic knitted

Branding Area: 40 x 130mm

Available Sizes: One Size Fits Most

### AVAILABLE COLOURS



Red



Black



Royal



Navy



Black

## GLACIER RIBBED BEANIE

Head



WINTER COLLECTION

## GLACIER RIBBED BEANIE



NEW

- Core, Spun Merino
- Extra Soft Yarn
- Stretch Fit

Branding Area: 40 x 130mm

Available Sizes: **One Size Fits Most**

### AVAILABLE COLOURS



Black



Navy



Charcoal



Grey Melange



Red



Royal



White



Khaki



Olive



**GLACIER RIBBED  
BEANE**  
Cozy Melange

**FROST MELANGE  
BEANIE**  
Royal Melange





WINTER COLLECTION

## FROST MELANGE BEANIE



NEW

- 100% Acrylic
- Fold Up Band

Branding Area: 40 x 130mm

Available Sizes: One Size Fits Most

### AVAILABLE COLOURS



Navy  
Melange



Charcoal  
Melange



Burgundy  
Melange



Royal  
Melange

PLEASE NOTE: Colours displayed serve as an indication only. They are not necessarily an accurate representation of the garment.



WINTER COLLECTION

## ASPEN BEANIE



- Beigom acrylic knitted
- Fold top band

Branding Area: 40 x 130mm

Available Sizes: **One Size Fits Most**

### AVAILABLE COLOURS

White	Grey Melange	Charcoal	Black	Chocolate	Stone	Yellow
Navy	Navy	Purple	Burgundy	Red	Orange	Cyan Orange
Turquoise	Dove Blue	Lime	Emerald	Bottle	Pink	Fuchsia

PLEASE NOTE: Colors displayed serve as an indication only. They are not necessarily an accurate representation of the garment.

WINTER COLLECTION

## ASPEN SCARF



- 80gsm Acrylic Knitted
- Fringing On Hemline

Available Sizes: One Size Fits Most

### AVAILABLE COLOURS



Grey Melange



Red



Burgundy



Black



Navy



Royal



Borde



WINTER COLLECTION

## ASPEN GLOVES



- 80gsm
- Acrylic Knitted
- Individually Shaped Fingers

Available Sizes: One Size Fits Most

### AVAILABLE COLOURS



Grey Melange



Red



Burgundy



Royal



Navy



Black



Borde





WINTER COLLECTION

## BLIZZARD SCARF



- 80gsm Polar Fleece
- Scarf With Fringe
- Scarf Size 180x120cm

Available Sizes: **One Size Fits Most**

### AVAILABLE COLOURS



Tan



Yellow



Orange



Red



Blue



Charcoal



Royal



Navy



Black



Bottle



WINTER COLLECTION

## BLIZZARD GLOVES



- 1/2L - 80gsm Polar Fleece
- 1/2L - 80gsm Polar Fleece
- Individually Shaped Fingers
- Elastic Wrist

Branding Area: 60 x 20mm

Available Sizes:

S/M

L/XL

### AVAILABLE COLOURS



Navy



Black





## BLIZZARD BEANIE

Navy

WINTER COLLECTION

# BLIZZARD BEANIE



- 800m Polar Fleece
- Structured With Cuff

Standing Area: 40 x 130mm

Available Sizes: One Size Fits Most

### AVAILABLE COLOURS



Brown



Yellow



Orange



Red



Olive



Charcoal



Navy



Black



Dark



Dark

**KIDS** COLLECTION

KIDS CRICKET HAT

Navy





## KIDS CRICKET HAT

Navy

KIDS COLLECTION

# KIDS CRICKET HAT



- 100% Heavy Brushed Cotton
- Metal System
- Cord With Slide Toggle

Branding Area: 80 x 60mm

Available Sizes:

S/M Size

L/XL Size

## AVAILABLE COLOURS



White



Khaki



Red



Burgundy



Black



Navy



Dark Purple

KIDS AMERICANO

Royal



KIDS COLLECTION

## KIDS AMERICANO



- Heavy Weight (300g)
- 8 Panel Structured
- Per-Curved Peak
- 4 Row Ribbed Sweatband

Branding Area: 60 x 120mm

Available Sizes: One Size Fits Most



Self Covered Velcro Strap

### AVAILABLE COLOURS



PLEASE NOTE: Colors displayed serve as an indication only. They are not necessarily an accurate representation of the garment.

KIDS AMERICANO  
Camió Green



KIDS COLLECTION

## KIDS SUPERIOR 5 PANEL



END OF  
RANGE

- Poly cotton blend (50% - 50%)
- 5 Panel Structured
- Embroidered Straps
- Pre-Curved Peak
- 5 Row Stitched Sweatband



Self Covered Velcro Strap

Branding Area: 50 x 100mm

Available Sizes: **One Size Fits Most**

### AVAILABLE COLOURS



Royal



Navy



Black



Red



Burgundy



Bottle



White

KIDS COLLECTION

## KIDS PHOENIX BUCKET HAT



END OF  
RANGE

- 100% Cotton Twill
- Unstructured
- Embroidered Straps

Branding Area: 60 x 120mm

Available Sizes:

**S/M Size**

**L/XL Size**

### AVAILABLE COLOURS



White



Khaki



Grey



Red



Burgundy



Navy



Black



Bottle



Royal



PLEASE NOTE: Colours displayed serve as an indication only.  
They are not necessarily an accurate representation of the garment.



KIDS COLLECTION

## KIDS ASPEN GLOVES



- Acrylic knitted
- Individually Shaped Fingers

Available Sizes: One Size Fits Most

### AVAILABLE COLOURS



Navy



Black



Royal



Bottle



KIDS COLLECTION

## KIDS ASPEN BEANIE



- Acrylic knitted
- Fold Up Band

Branding Area: 80 x 45mm

Available Sizes: One Size Fits Most

### AVAILABLE COLOURS



Red



Burgundy



Royal



Navy



Bottle



Black



Pink

## KIDS FISHERMAN

Navy



KIDS COLLECTION

## KIDS FISHERMAN



- UV Protected Polyester Cotton
- Back Flap For Added Neck Protection

Branding Area: 40 x 80mm

Available Sizes: One Size Fits Most



Self Covered Velcro Strap

### AVAILABLE COLOURS



Navy



Beige

PLEASE NOTE: Colours displayed serve as an indication only. They are not necessarily an accurate representation of the garment.



# AFRICAN COLLECTION



## BIG 5 SA

- Cotton Twill
- 5 Panel Structured
- Pre-Curved Peak
- Embroidered Eyelets
- 3D Embroidered "South Africa & Big 5"
- Sewn-on Printed SA Flag on Back of Cap
- Self Fabric Strap With Brass Clasp Buckle With Tuck-In Return

### AVAILABLE COLOUR



Coffee / Stone

## CAVE

- Heavy Brushed Cotton
- Military Style Cap
- Pre-Curved Peak
- Metal Eyelets
- 3D Embroidered "South Africa" & Sewn-on Printed SA Flag
- Self Fabric Strap

### AVAILABLE COLOURS



Channel

Khaki

## HOWZIT CAPE TOWN

- Cotton Twill
- 5 Panel Trucker Style Cap
- Mesh Back With Plastic Tab Closure
- Printed Front Panel With Embroidered 3D "Cape Town"
- Sewn-on Printed SA Flag on Back of Cap

### AVAILABLE COLOUR



Blue

## HOWZIT SA

- Cotton Twill
- 5 Panel Trucker Style Cap
- Mesh Back With Plastic Tab Closure
- Printed Front Panel With Embroidered 3D "South Africa"
- Sewn-on Printed SA Flag on Back of Cap

### AVAILABLE COLOUR



Grey/Channel

## IMPI

- Cotton Twill Bucket Hat
- Unstructured
- Embroidered Eyelets
- "Animals In Country" Embroidery With "South Africa" On Front Panel
- Woven SA Flag Sidepanel

### AVAILABLE COLOUR



Stone

## KIDS MAKITI

- Kids Cotton Twill Bucket Hat
- Unstructured
- Embroidered Eyelets, contrast under brim
- Big 3 embroidered with "South Africa"
- Woven SA Flag Sidepanel

### AVAILABLE COLOUR



Khaki / Olive



## KIDDO

- Cotton Twill
- 5 Panel Structured
- Pre-Curved Peak
- Embroidered Eyelets
- 3D Embroidered "South Africa" & Big 3
- Sewn-on Printed SA Flag on Back of Cap
- Self Fabric Strap With Break Clasp Buckle With Tuck-In-Return

### AVAILABLE COLOURS



Pink



Navy



Royal

## KIDS CHEEKY

- Heavy Brushed Cotton With COMO Print Under Peak
- 5 Panel Structured
- Pre-Curved Peak
- Embroidered Eyelets
- Flat And 3D Embroidered Front
- Self Fabric Strap
- Sewn-On Printed SA Flag On Back Of Cap

### AVAILABLE COLOURS



Pink



Stone

# KIDS CONGO

- Cotton Twill
- 5 Panel Cap
- Pre-Curved Peak
- Mesh Back With Plastic Tab Closure
- Printed Front Panel With Embroidered 3D "South Africa"
- Sewn-On Printed SA Flag On Back Of Cap

## AVAILABLE COLOUR



Olive

# LION CUB

- Camo Printed Cotton Twill
- 5 Panel Trucker Style Cap
- Pre-Curved Peak
- Mesh Back With Plastic Tab Closure
- Lion Badge On Front Of Cap & "South Africa" Embroidery On Back
- Sewn-On Printed SA Flag On Back Of Cap

## AVAILABLE COLOUR



Green/Camo

# MUMBO

- Heavy Brushed Cotton
- 5 Panel Structured
- Pre-Curved Peak
- Embroidered Eyes
- Self-Palms "Mumbo" Strap
- Animal Kibbles Embroidery With Word "South Africa" On Front Panel
- Sewn-On Printed SA Flag On Back Of Cap

## AVAILABLE COLOURS



Char / Stone

Navy

# PRIDE

- Cotton Twill
- 5 Panel Unstructured
- Pre-Curved Peak With Coloring On The Top & Edges
- Embroidered Eyes
- Printed Graphics On Front Panel
- Strap Buckle Fold Down Clasp
- Printed SA Flag Back Of Cap

## AVAILABLE COLOUR



Stone

## SA SAFARI

- Heavy Brushed Cotton
- 6 Panel Structured
- Pre-Curved Peak On Faux Leather
- Embroidered Eyelets
- Belt Buckle Closure
- Big S & "South Africa" Embroidered On The Front
- Woven SA Flag Embroidered On Back Of Cap

### AVAILABLE COLOURS



Stone / Olive



Stone / Khaki



Black / Olive

## RANGER AC

- Heavy Cotton Twill
- Bush Hat Style
- Durable Metal Side Buckle
- Cord With Slide Toggle
- Animals In Country™ Embroidery On Front Panel With "South Africa" Embroidery
- Woven SA Flag Sideband

### AVAILABLE COLOUR



Stone

## RUSTY

- Garment Washed Cotton
- 6 Panel Unstructured Cap
- Pre-Curved Peak With Binding & Piped Map Of Africa
- Appliqued "South Africa" On Front Panel
- Self-Covered Velcro Strap Closure

### AVAILABLE COLOUR



Burnt Orange



## PREDATOR

- Heavy Brushed Cotton
- 6 Panel Structured
- Subtle Pre-Curved Peak
- Embroidered Eyelets
- Self-Fabric Strap With Belt Buckle Closure
- Embroidered Cheetah On Front, "South Africa" On Side
- SA Flag Side Winder

### AVAILABLE COLOUR



Natural / Tan



# SYMBOLS & TECHNOLOGY

The symbols below are used throughout this catalogue to indicate the recommended branding medium and special fabric features.



# CAP COMPONENTS



## Crown

The Crown is the part of the cap that sits on the top of the head. It is comprised of a number of triangular cut pieces known as panels that, when sewn together, create a round shape to fit the head. A cap crown can either be structured or unstructured.



## Panel

The panels of the cap are the different pieces of material, sewn together, to make the cap. Number of panels can range between 5&8 panels depending on the style of cap/hat.



## Brim, Visor Or Peak

The peak of a cap is also known as the visor or bill. The peak is the horizontal part of a cap and it protects the face from the sun. It's most often made out of PVC plastic, sewn in between the fabric (panels, cotton, wool etc.) (to keep its curve even after it's been washed).



## Sweatband

Only fountain water caps & hats, the sweatband runs along the inside of the cap or hat & ensures that perspiration is absorbed.



## Closure

They close the cap or hat in the back. Our fitted caps & hats are just sewn closed in the back but have stretchy material to fit comfortably on the head.

Our adjustable caps & hats, have a variety of closures, please see section on cap closures for the different closing mechanisms available below.



Adjustable Buckle & Toggle Closure



Visor Closure



Elastic Hooked Closure



Plastic Tab Closure



Adjustable Strap Buckle & Toggle Closure



Strap Closure

LETS TALK BRAND



**FWRD**<sup>®</sup>